



INSTALLATION GUIDE

ID DESIGNER PC-Based Software Installation Guide Version 4.0

TABLE OF CONTENTS

- 1 ABOUT THIS GUIDE..... 2
- 2 MINIMUM SYSTEM REQUIREMENTS..... 2
- 3 VERIFYING SYSTEM REQUIRMENTS..... 2
 - 3.1 Windows 10 2
 - 3.2 Windows 7 4
- 4 LOADING THE ID DESIGNER SOFTWARE..... 5
 - 4.1 From a DVD..... 5
 - 4.2 From the Website 6
 - 4.3 Licensing the ID DESIGNER Software 7
- 5 CONTACT US 8

1 ABOUT THIS GUIDE

This installation guide provides the information needed to install Salamander ID DESIGNER software. Depending on the resources of the computer the ID DESIGNER software is installed on, the installation process is estimated to take between 15 and 30 minutes to complete.

2 MINIMUM SYSTEM REQUIREMENTS

ID DESIGNER software installation requires the user to have Administrator rights to the computer. In addition, the computer must meet the following minimum system requirements:

Hardware/Software	Minimum System Requirements
Processor	1 GHz Intel Compatible
RAM (Memory)	2 GB
Screen Resolution	800x600
Hard Disk Free Space	2 GB
Operating System	Windows XP Professional SP 3

Table 2.1

3 VERIFYING SYSTEM REQUIRMENTS

3.1 Windows 10

Step 1: Right-click Start → System.

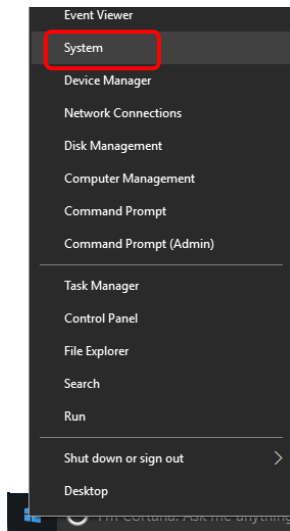


Figure 3.1.1

Step 2: Verify the computer's operating system, processor speed, and RAM meet minimum requirements.

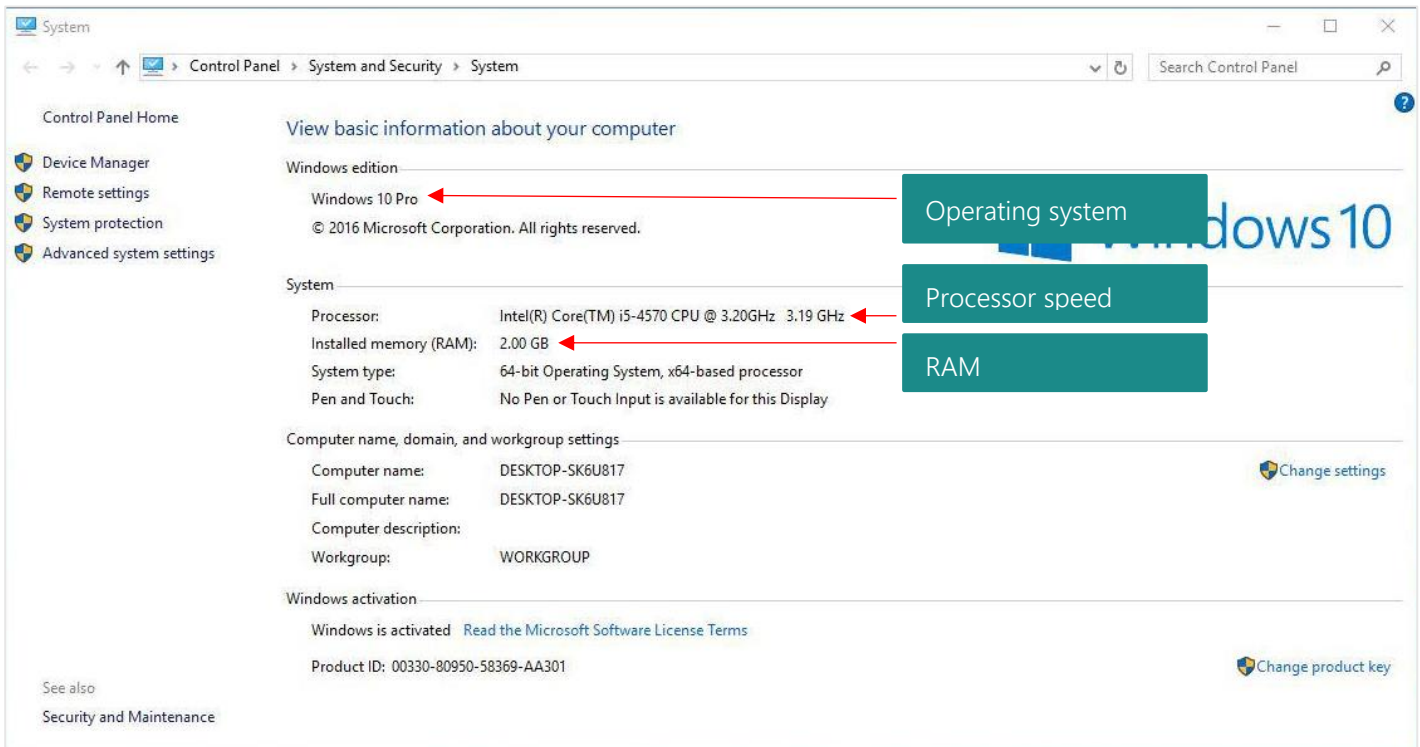


Figure 3.1.2

Step 3: To verify there is enough free space on the computer's hard disk to install RAPID TAG, right-click Start → File Explorer → This PC.

Step 4: Verify there is a minimum of 8 GBs of free space on the hard disk (typically the C: drive).

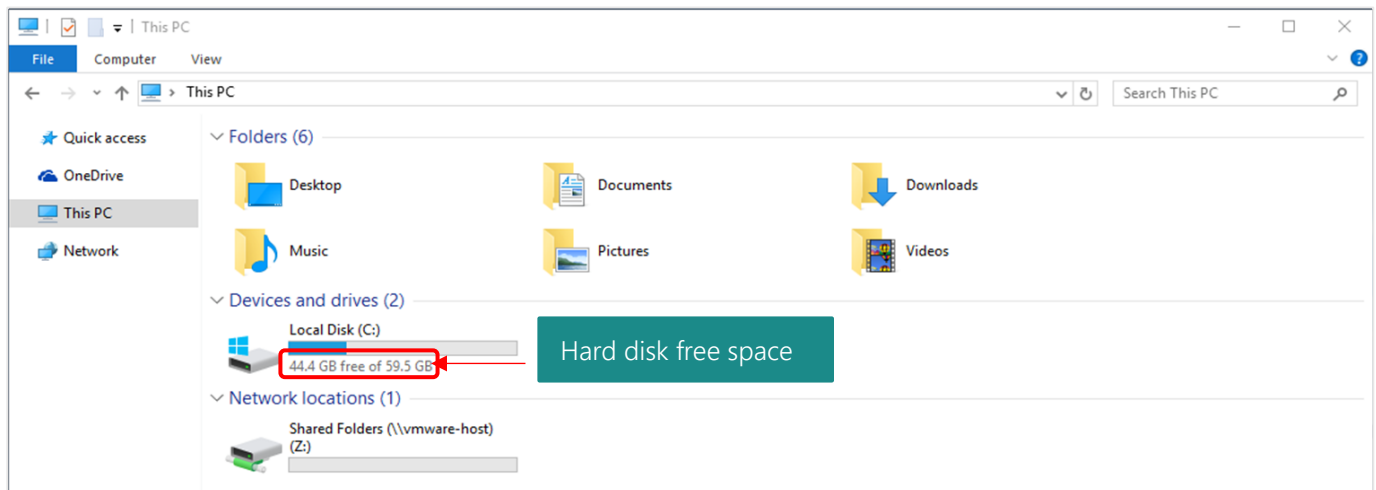


Figure 3.1.3

3.2 Windows 7

Step 1: Right-click Start → Right-Click Computer → Properties.

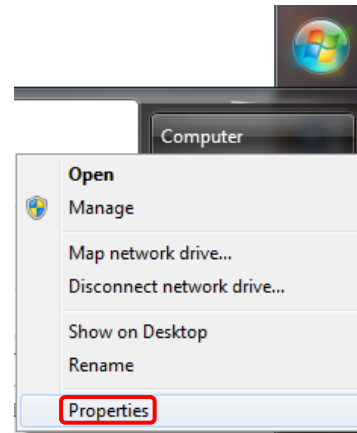


Figure 3.2.1

Step 2: Verify the computer's operating system, service pack, processor speed, and RAM meet minimum requirements.

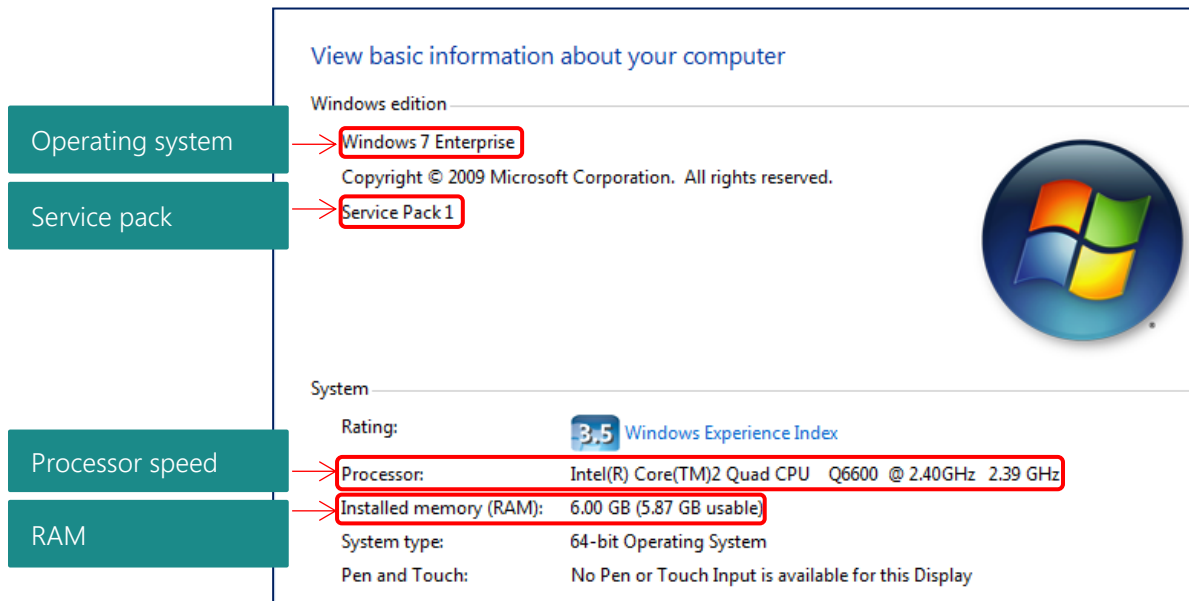


Figure 3.2.2

Step 3: To verify there is enough free space on the computer's hard disk to install RAPID TAG, click Start → Left-Click Computer.

Step 4: Verify there is a minimum of 8 GBs of free space on the hard disk (typically the C: drive).

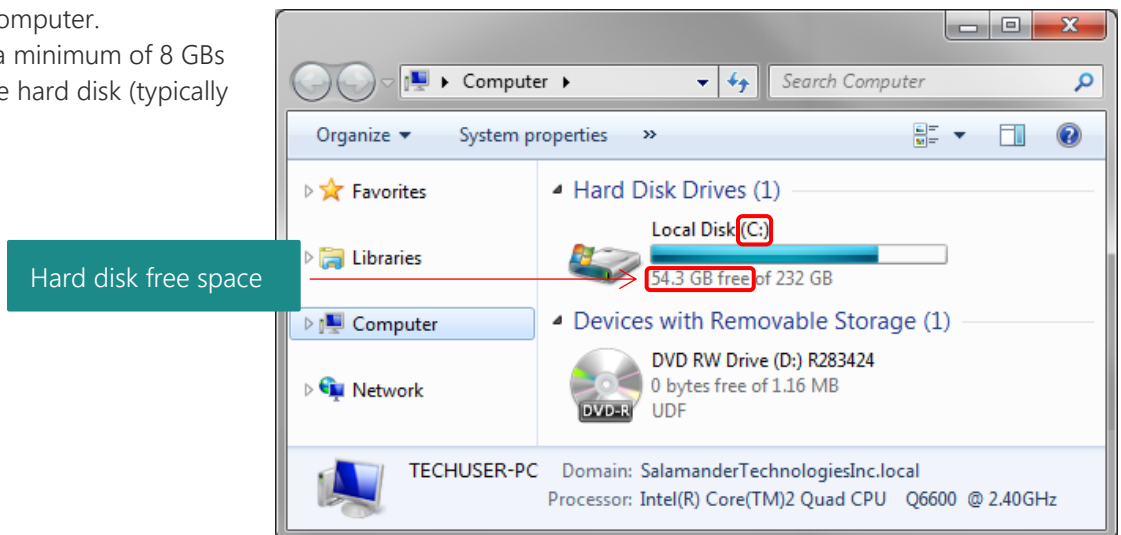


Figure 3.2.3

4 LOADING THE ID DESIGNER SOFTWARE

4.1 From a DVD

Step 1: Insert the Salamander Suite DVD.

Step 2: Select ID DESIGNER.

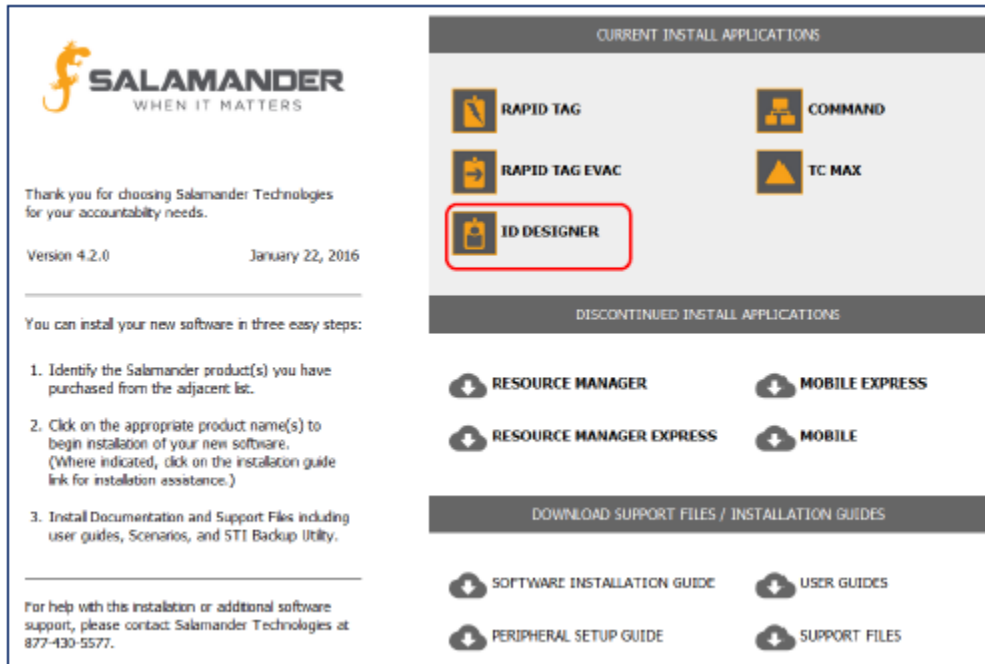


Figure 4.1.1

Step 3: When prompted, choose to run the file and confirm any security warnings.

Step 4: Follow the prompts in the Salamander Setup Wizard.

Step 5: For the Protocols and Ports screen of the wizard, select TCP.

Some additional resources available are the User Guides and Support Files. The Support Files contain the manufacturer user guides for Salamander-sold peripherals as well as corresponding stand-alone driver and service pack installs.

4.2 From the Website

Step 1: Click the download link in the ID DESIGNER order confirmation email or go to www.salamanderlive.com → NEED HELP? → Resources.

Step 2: Select Install ID DESIGNER.

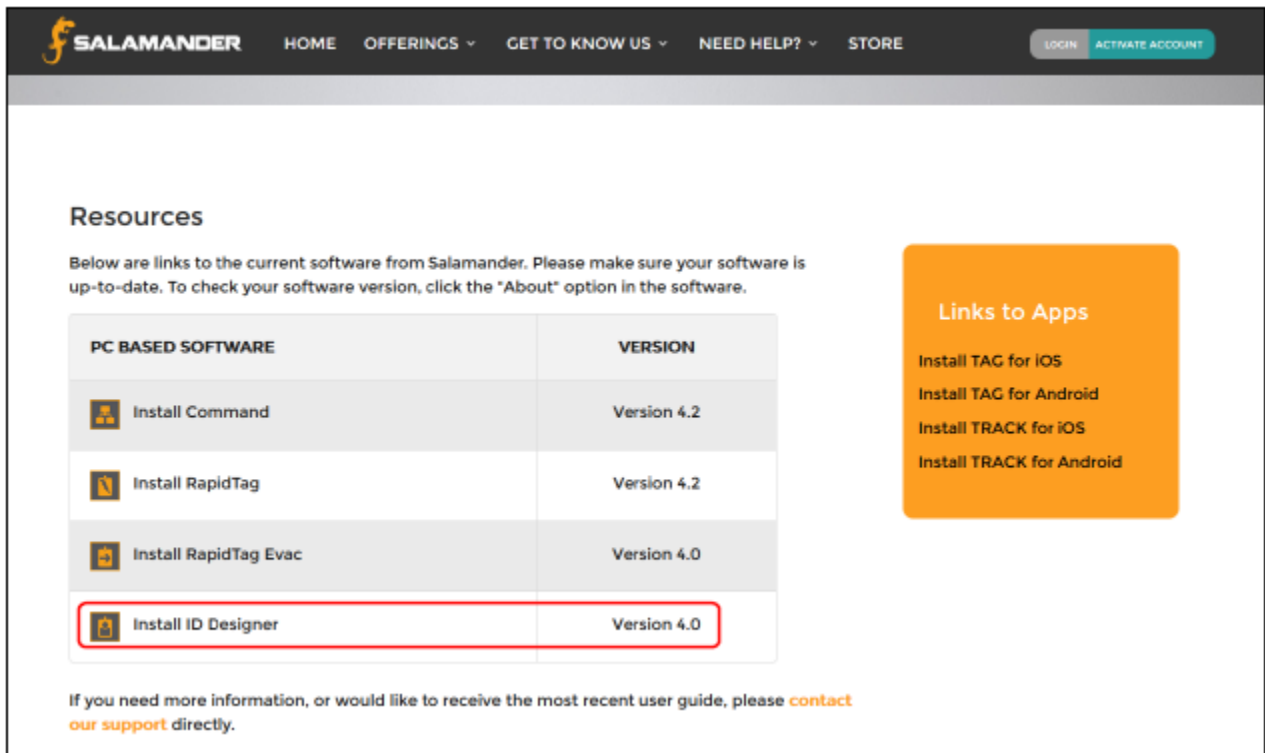


Figure 4.2.1

Step 3: Depending on the internet browser, a prompt may appear asking to run or download the iddesigner.exe file. If this occurs choose to download the file. If no prompt is presented, the browser has automatically downloaded the file. This may take up to 30 minutes to download..

Step 4: Once the iddesigner.exe file is downloaded, navigate to the download location (typically the Download folder).

Step 5: When prompted, choose to run the file and confirm any security warnings.

Step 6: Follow the prompts in the Salamander Setup Wizard.

Step 7: Click Next to finish the installation.

You may select User Guides & Scenarios to view Salamander's user guides and incident scenarios. You may also select Support Files to view manufacturer user guides for Salamander-sold peripherals as well as corresponding stand-alone drivers and software.


4.3 Licensing the ID DESIGNER Software

Below is an example of the Salamander Product Information Report included with the order of the ID DESIGNER software. This report contains the Application Keys for the ID DESIGNER software. To license the ID DESIGNER software, follow the steps below:

--- Software Products ---							
Product	Part #	Ver	Application Key	Serial #	Parser	SMA Exp	
rapidTAG	IT-RT	4.0	1dbfb670-1ed1-4373-9911-82c046e72380	00117761	Yes	5/1/2014	
resourceMGR	IT-RM	4.0	dfb4347c-7326-438d-8c9d-f103c7d8af59	00117762		5/1/2014	
ID Designer	IT-DESIGN	4.0	32169d5d-3a18-4f12-866a-abd7bbaffd33	00117763		5/1/2014	
Command	IT-COM	4.0	d9bdb146-df7b-4bec-a00b-156e43612446	00117764		5/1/2014	

Figure 4.3.1



- Step 1: Double-click on the ID DESIGNER icon . The License Activation screen will appear.
- Step 2: Enter the ID DESIGNER Application Key into the License Key field.
- Step 3: Click OK or Save and the ID DESIGNER software installation process is complete.

5 CONTACT US

Salamander Technologies, LLC.
122 West State Street
Traverse City, MI 49684

877.430.5171

training@salamanderlive.com
www.salamanderlive.com